



# the WC1 Sorting office

# 120,000 sq.ft

A 1960's industrial site on New Oxford Street covering one acre and sitting adjacent to Soho, Covent Garden and Bloomsbury. The 120,000 sq.ft ground floor is a raw, gritty space that will really fire the imagination and is perfect for any large scale production.

- Drive-in Access for Trailer Toilets
- Rigging Points Can Be Added
- Broadband Streaming Facility

Contact us to discuss event bookings

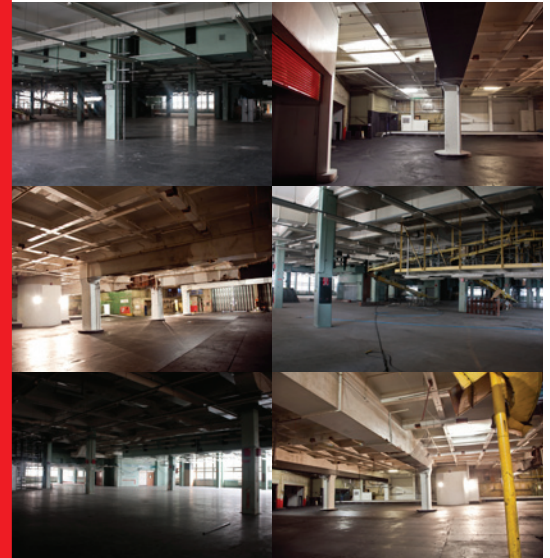
---

**LOCATION  
HOUSE**

**THE SORTING OFFICE**

21-31 New Oxford Street, London WC1

t. +44 (0)20 7269 9750 e. [info@locationhouse.co.uk](mailto:info@locationhouse.co.uk) w. [www.locationhouse.co.uk](http://www.locationhouse.co.uk)



**SUITABLE FOR ::**

Art Exhibitions | Fashion Shows | Private & Corporate Parties | Private Dinners | Press Shows | Product Launches |  
Public Events | Theatre Productions | Film & Photographic Location | Set Build

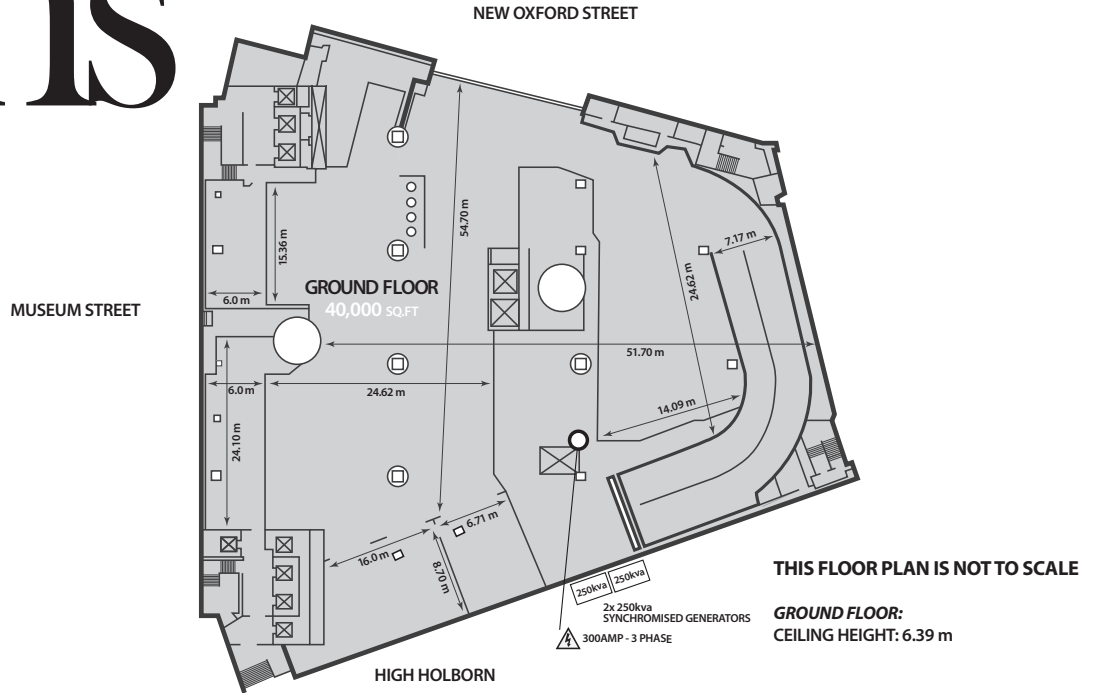
**LOCATION  
HOUSE**

**THE SORTING OFFICE**

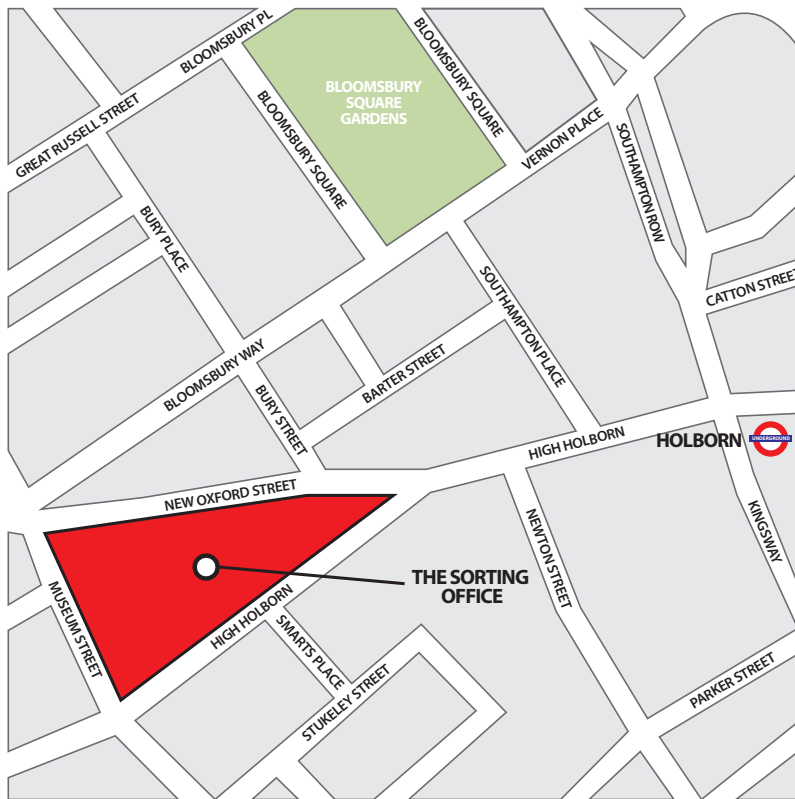
21-31 New Oxford Street, London WC1

t. +44 (0)20 7269 9750 e. [info@locationhouse.co.uk](mailto:info@locationhouse.co.uk) w. [www.locationhouse.co.uk](http://www.locationhouse.co.uk)

# floor plans



# directions



## transport

tube:

Holborn | Tottenham Court Road

rail:

Kings Cross | St Pancras International |  
Euston | Charing Cross

bus:

1, 8, 19, 25, 38, 55, 98, 171, 242

**LOCATION  
HOUSE**

**THE SORTING OFFICE**

21-31 New Oxford Street, London WC1

t. +44 (0)20 7269 9750 e. [info@locationhouse.co.uk](mailto:info@locationhouse.co.uk) w. [www.locationhouse.co.uk](http://www.locationhouse.co.uk)

