



# unit 5

WC1

An empty retail space with exposed brickwork, creating a flexible and urban backdrop in the heart of central London.

- Local Power
- Disabled Access

Contact us to discuss event bookings

900 sq.ft

**LOCATION  
HOUSE**

**UNIT 5**

Victoria House, Bloomsbury Square, London WC1B 4DA

0 +44 (0)20 7269 9750 e. [info@locationhouse.co.uk](mailto:info@locationhouse.co.uk) w. [www.locationhouse.co.uk](http://www.locationhouse.co.uk)



**SUITABLE FOR ::**

Art Exhibitions | Pop-Up Café | Pop-Up Restaurant | Pop-Up Shop | Press Shows |  
Product Launches | Public Events | Film & Photographic Location

**LOCATION  
HOUSE**

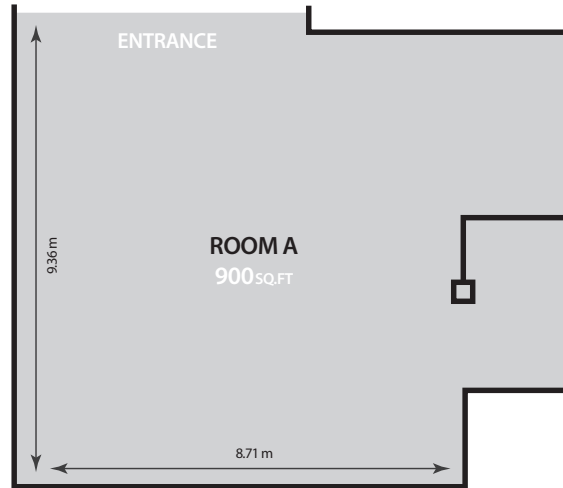
**UNIT 5**

Victoria House, Bloomsbury Square, London WC1B 4DA

0 +44 (0)20 7269 9750 e. [info@locationhouse.co.uk](mailto:info@locationhouse.co.uk) w. [www.locationhouse.co.uk](http://www.locationhouse.co.uk)

# floor plans

SOUTHAMPTON ROW



HEIGHT:

6.99m - Highest Point

3.95m - Lowest Point

# directions



## transport

**tube:**

Holborn | Kings Cross | Russell Square

**rail:**

Kings Cross | St Pancras International

**bus:**

1, 8, 19, 25, 38, 55, 59, 68, 91, 98, 168,  
171, 188, 242

