



# B1

WC1

22,000sq.ft

A 22,000sq.ft. blank canvas in central London with interesting features and textures including tiles, exposed brick & white walls.

- 4 x 63amp 3 phase
- 10mb Wireless/Broadband Internet
- Streaming Facility
- Rigging Points
- Loading Bay
- Pay & Display Parking
- Disabled Access
- Toilets

Contact us to discuss event bookings



**SUITABLE FOR ::**

Art Exhibitions | Award Ceremonies | Conferences | Fashion Shows | Private & Corporate Parties | Private Dinners | Press Shows |  
Product Launches | Public Events | Theatre Productions | Wedding Receptions | Film & Photographic Location | Set Build

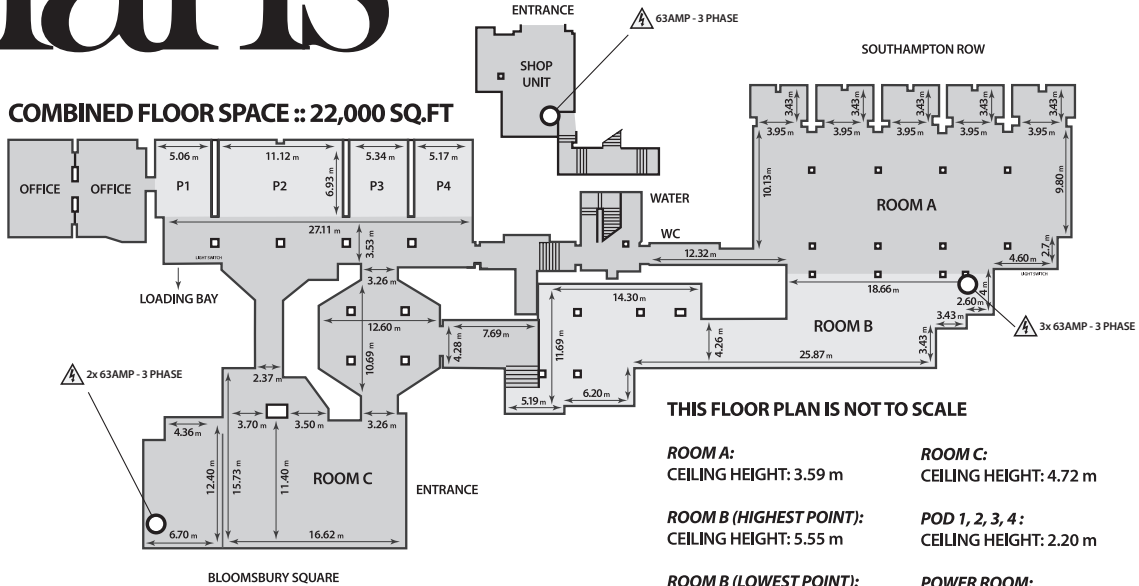
**LOCATION  
HOUSE**

**B1**

Victoria House, Bloomsbury Square, London WC1B 4DA  
t. +44 (0)20 7269 9750 e. [info@locationhouse.co.uk](mailto:info@locationhouse.co.uk) w. [www.locationhouse.co.uk](http://www.locationhouse.co.uk)

# floor plans

COMBINED FLOOR SPACE :: 22,000 SQ.FT



THIS FLOOR PLAN IS NOT TO SCALE

- |  |  |
|--|--|
| <b>ROOM A:</b><br>CEILING HEIGHT: 3.59 m                 | <b>ROOM C:</b><br>CEILING HEIGHT: 4.72 m         |
| <b>ROOM B (HIGHEST POINT):</b><br>CEILING HEIGHT: 5.55 m | <b>POD 1, 2, 3, 4:</b><br>CEILING HEIGHT: 2.20 m |
| <b>ROOM B (LOWEST POINT):</b><br>CEILING HEIGHT: 3.80 m  | <b>POWER ROOM:</b><br>CEILING HEIGHT: 2.64 m     |

# directions



## transport

### tube:

Holborn | Kings Cross | Russell Square

### rail:

Kings Cross | St Pancras International

### bus:

1, 8, 19, 25, 38, 55, 59, 68, 91, 98, 168, 171, 188, 242

